



APRIL 2023 NEWSLETTER

4月

English Version



✧ The area where public sewerage can be used will expand from April ✧

Public sewers will be available in parts of the following areas, so all households in the target areas will need to connect as soon as possible.

District	Target area
<i>Ooka</i>	<i>Ooka (Shimoishida etc)</i>
<i>Katahama</i>	<i>Ozuwa, Kozuwa</i>
<i>Hara</i>	<i>Hara</i>
<i>Dai san</i>	<i>Shimo Kanuki, Kami Kanuki, Nishijimacho, Ganyudo</i>

*Please visit a city website for detail.

- **Contact:** ☎ 055-934-4864 Sewerage Maintenance Division (*Gesuido Seibi ka*)

✧ Issuance of subsidy ticket of indoor pool usage ✧

- **What:** Due to the rebuilding of the city's indoor swimming pools, we subsidize part of the usage fees for the use of the indoor swimming pools in nearby municipalities by citizens. From March 27, we started issuing subsidy tickets for 2023 fiscal year.
- **When:** Weekday, 8:30 – 17:00
- **Who:** Persons three years or older who are registered as a resident in the city.
- **Facility available:** Shimizucho Onsui Pool, Mishima Shimin Onsui Pool, Ken Fuji Sueiijo and Nagaoka Onsui Pool

How to apply	
In person	Bring the application form and an ID issued by a public institution to the With Sports Division. You will be able to find the application form at the With Sports Division, 8 th floor of the city hall or the city website
By mail	Mail the application form, available on the city website with a copy of an ID issued by a public institution. You will receive the tickets at a later date by mail.

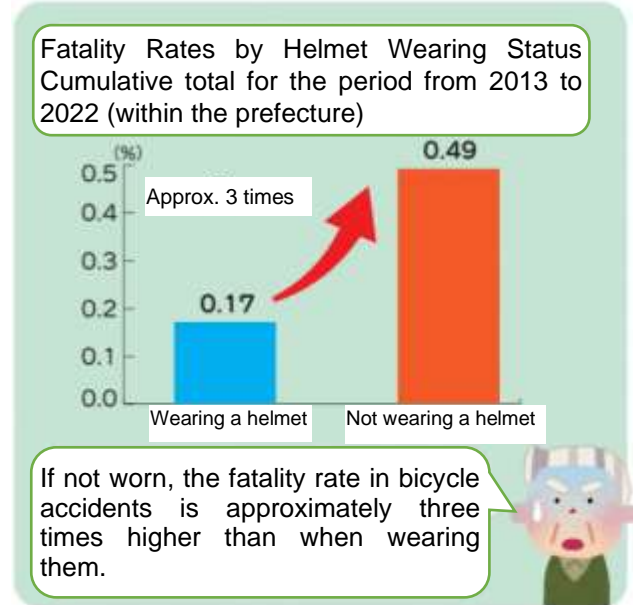
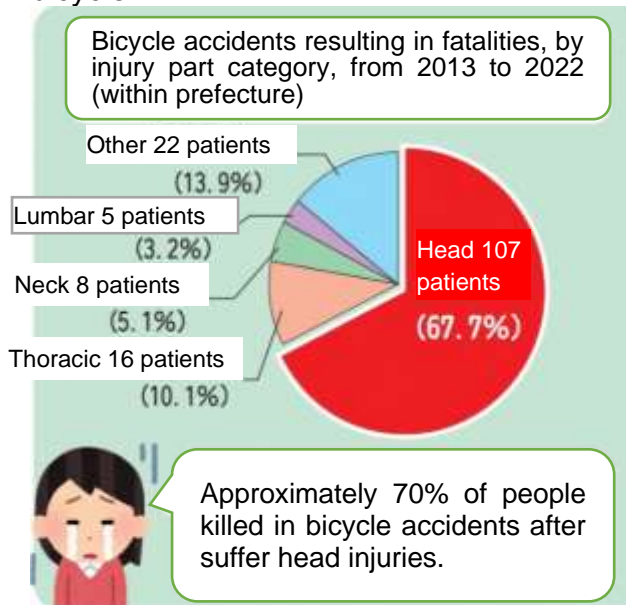
* Visit the city website for detail.

- **Contact:** ☎ 055-934-4875 With Sports Division (*With Sports ka*)
〒410-8601 Numazu Shiyakusho (沼津市役所)

✧ Bicycle helmets are essential ✧

New normal for adults and children

With the enforcement of the revised Road Traffic Law, you are strongly recommended wearing a bicycle helmet since April 1. To protect your precious life, please wear a helmet when you ride a bicycle.



- **Contact:** ☎ 055-934-4742 Community Safety Division (*Seikatsu Anshin ka*)

✧ We support the elderly in returning their driver's license voluntarily ✧

The percentage of traffic accidents involving older drivers is increasing. If you are at all concerned about your driving, you may want to consider returning your driver's license voluntarily.

Who: Those who are 65 years of age or older living in the city and who have voluntarily returned their valid driver's license.

Details of support: Bus/taxi coupon for 5,000 yen (100-yen ticket x 50) that can be used by the person and their family at a partner company in the city

*If you do not renew your driver's license and it expires, it is not a voluntary return.

*The application should be within a 6 month period after the return of the driver's license, and the coupon will only be issued once.

Step 1: Returning a driver's license voluntarily

Where: Numazu Police Station or Tobu Driver's License Centre (Ashitaka)

What to bring: Driver's license

Issuance of Document: Cancellation notification of driver's license and Driver's license that has been made invalid.

*A driving record certificate (*Unten Keireki Shomeisho*) is issued to use as identification when returning a driver's license (Cost: ¥1,100).

Step 2: Issuance of bus/taxi coupons

Where: 1. Community Safety Division (*Seikatsu Anshin ka*), 2nd floor at City Hall or Heda Satellite Office

2. Numazu Police Station or each City Satellite Office in a city except for Heda Satellite Office

Receiving: 1. On the day of application 2. By mail around a week after application

What to bring: Cancellation notification of driver's license and Driver's license that has been made invalid or a driving record certificate (*Unten Keireki Shomeisho*).

*A letter of attorney will be required when a proxy will apply.

*If you would like to complete the procedure at the same place, please go to the Numazu Police Station to apply for a bus/taxi ticket. You will receive it by mail around a week.

- **Contact/Apply:** ☎ 055-934-4742 Community Safety Division (*Seikatsu Anshin ka*)

✧ Holiday/Nighttime consulting window for national health insurance payment ✧

- **When:** April 16 (Sun) 9:00 - 12:00 / April 6 (Thu), April 18 (Tue) 17:15 – 19:00
 - **Where:** National Health Insurance Division, 1st floor, City Hall
 - **Contact:** ☎055-934-4727 National Health Insurance Division (*Kokumin Kenko Hoken ka*)
-

✧ Nighttime consultation service for payment of resident tax ✧

- **When:** April 18(Tue), 5:15pm - 7pm
 - **Where:** Tax Administration Division on the 2nd floor of the City Hall
 - **Contact:** ☎ 055-934-4732 Tax Administration Division (*Nozei Kanri ka*)
-

✧ Nighttime consultation service for payment of water bills ✧

- **When:** April 18(Tue), 5:15pm - 8pm
 - **Where:** Water Service Division on the 1st floor of the Water Works Department Building
 - **Contact:** ☎ 055-934-4853 Water Service (*Suido Service ka*)
-

✧ Extension of Injury and Sickness Allowance application period in response to COVID-19 infections ✧

- **What:** The period for applying for Injury and Sickness Allowance as a result of COVID-19 has been extended to May 7 (Sun).
- **Details:** This allowance is specific to those employees insured by National Health Insurance or Late-Stage Medical Care System for the elderly. It provides an allowance for the period for which the eligible person cannot engage in labor due to being infected by COVID-19.

*Contact us for details or visit city website.

- **Contact:** ☎ 055-934-4725/055-934-4728 National Health Insurance Division (*Kokumin Kenko Hoken ka*)
-

✧ Complete the procedure for National Health Insurance as early as possible ✧

- **What:** April is a time of new employment and moving in/out. You need to go through the procedure for National Health Insurance in the case of applied for/withdrew from social health insurance, or moving in/out. If you need to report, please visit the National Health Insurance Division on the 1st floor at the city hall or each City Satellite Office and complete the procedure as soon as possible.
 - **Contact:** ☎ 055-934-4725 National Health Insurance Division (*Kokumin Kenko Hoken ka*)
-

✧ Children with specific chronic diseases are provided with daily living aids/equipment ✧

- **What:** The equipment is provided to children with specific chronic diseases who have difficulty in living their daily lives at home, to support their daily lives (co-payment is required according to household income).
 - Special toilet, special bed, equipment for supporting to walk and bath, wheelchair, head protection cap, electric phlegm vacuum, cool vest, UV protection cream, nebulizer (inhaler), stoma appliance (digestive/ urinary system) etc.



*For details of available aids/equipment and how to apply, please contact us or visit the Child Rearing Portal site.

- **Contact:** ☎ 055-951-3480 Health Promotion Division/Health Centre(*Kenko Zukuri ka/Hoken Centre*)
-

✧ Payment of city taxes using QR codes has been available since April ✧

- **What:** From April, payment of municipal tax can be made by scanning the QR code on the payment slip from various smartphone payment apps and the "Local Tax Payment Website."

*For details, please visit the city website or the Local Tax Payment Website.

- **Contact:** ☎ 055-934-4730 Tax Administration Division (*Nozei Kanri ka*)



Information on the vaccination of COVID-19

Infants, children, and those 12 years and older can be vaccinated at medical institutions in the city. Reservations are necessary for vaccination.

A booster vaccination for children aged 5 to 11 using the Omicron strain-specific vaccine has begun. Those who have completed the 2nd or 3rd vaccination are eligible and can be vaccinated at some medical institution in the city.

- ◆ Reservation and consultation for vaccination: ☎ 0120-236-258 (toll-free)
8:30 am – 6 pm (Also available on Saturdays, Sundays and national holidays)
- ◆ COVID-19 Vaccination Office: ☎ 055-951-3588; Weekdays, 8:30 am - 5 pm



For detail

Information on COVID-19 Infections

- ◆ City Consultation Desk
Crisis Management Division (*Kiki Kanri ka*) ☎ 055-934-4803 ☎ 055-934-4758
(weekdays, 8:30 am - 5:15 pm)
- ◆ Prefectural consultation centre for fever, etc.
*People who do not have a family doctor and have a fever, fatigue etc.
☎ 050-5371-0561 (open 24/7)
☎ 050-5371-0562 (weekdays, 8:30am - 5:15pm)

❖ Please note that the information is subject to change due to COVID-19. Please contact the organizers of the event or check for event cancellation and postponement information on the city website.

DISCLAIMER: The English version is a translation of the original newsletters in Japanese. While reasonable efforts are made to provide accurate translations, there might be some discrepancy. We encourage you to please report if you find any inaccuracy or translation error.