

GUIDEBOOK OF HOW TO PUT OUT GARBAGE

English
&
Portuguese

1. Separate neatly before putting out the garbage

Order and way of thinking to separate and classification

- ① - Separate the garbage properly before disposal.
- ② - Separate the garbage that has plastic marks on Plastic containers and packaging once a week.
- ③ - Separate the items that must be burned as Burnable Garbage.
- ④ - Anything does not apply to ① thorough ③ put out on the day for Landfill Garbage.



2. Put out the garbage to the designated location by 8:00 a.m. on the assigned day

Please check the collection day from the annual garbage collection schedule, prepared by the municipal government.



3. To a predetermined location

Please put garbage at the collection point that is decided by each area.

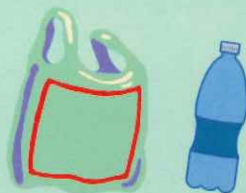
Do not put garbage in the other area of the collection point.



Garbage to be disposed of using Numazu city-designated bags (沼津市指定袋)



- Burnable Garbage
- Plastic Containers and Packing
- Landfill Garbage



- Ceramics, Glass, and Rubber Goods (Category ①)
- Thermal Recycling Plastic Garbage, including hard plastic materials (Category ③)

The Numazu city-designated bags (沼津市指定袋) are available for purchase in supermarkets and convenience stores in Numazu city.

Plastic bags used by supermarkets, etc. that are labeled as “Numazu city-designated bags (沼津市指定袋)” can also use for garbage disposal.



These designated bags may not be used for disposal of industrial garbage.

• Any violation of rules, such as throwing of garbage on the roadside, in an open area, or in a river shall be subject to a penalty.



Clean Center -Department of Administrative Services, Clean Center
055-933-0711 -Department of Collection, Clean Center

- If you find the garbage that is unlawfully dumped;
- If you want to collect oversize garbage for Elderly and disabled households;
- If you find a pet whose owner is unknown or other animal dead on the road;
- If you want to establish a new garbage collection point, change the location of one, or have one removed;
- If you have a question about how to separate/dispose of garbage;
- If you want to hold a lecture about how to dispose of garbage;
- If you want to bring in own garbage to Clean Center;
- If you want a large volume of garbage is produced by changing residence.

Burnable Garbage

Collecting day: Twice a week

Collecting place: Designated garbage collection point



Point:
thick branches and tree trunks are classified as landfill garbage(Category②) If it is a large volume, bring it to the cleaning plant or ask Waste Disposer Treatment for collection.

Kitchen Garbage

-Inedible parts of vegetables, meat, fish, etc.

-Used tea leaves

-Food waste

-Sea shells

-Cooking oil;

How to dispose of oil:

-Soak it on waste cloth.

-Absorb the oil.

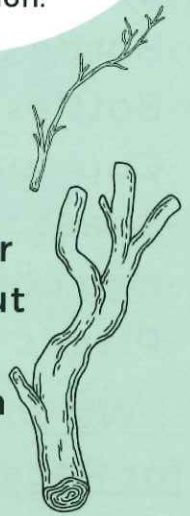
Point:
kitchen waste must be well-drained! Please drain the water before you trash the draining bag.



Tree Branches, Grass

※For the branches smaller than 5 cm in diameter, cut them into approx. 50cm long and tie them up with a rope after drying.

※ For plant, take off the dirt/sand.



Garbage that smells, dirty and one that is unsuitable for the recycle will be classified as "Burnable Garbage".

Unrecyclable Paper

-Pieces of paper with a size smaller than 55×91mm

-Photos

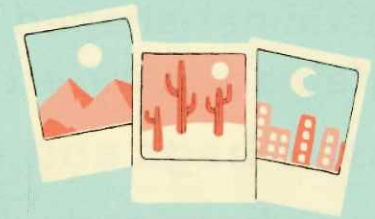
-Tissue paper

-Paper bags for vacuum cleaners

-Paper plates, etc.

-Paper drink packages

-Paper packages with silver interior



Point:
The miscellaneous recyclable paper separate the recyclable paper from others and trash it on "Recyclable Garbage Day/Used paper".

Dirty items that need to be burned

-Socks

-Toothbrush

-Stockings

-Tawashi (toilet brush)

-Underwear

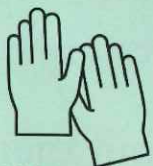
-Gloves

-Hats

-Straws

-Hairbrushes

-Draining bag



-Wooden chopsticks

-Diapers, sanitary products

(dirty things must be excluded)

-Razors (plastic made)

-Toilet sand for pets

Made of plastic and difficult to clean

Dirty containers and packaging

Examples: tube for seasoning and toothpaste

Others

-Hair, wigs

-Crayons

-Packing tape

-Paint tubes (made of plastic)

- Paint, etc. (in liquid form)

※soak to e.g. cloths

-Ventilation fan filter

-Items with plastic frames



Plastic Containers. Packing with

Collecting day: Once a week

Collecting place: Garbage collection point
(search for your nearest collection point!)

- Bottle, cup.
- Bottle contained Sauce, Detergent
- Bottles of oil, etc.
- Cup contained yogurt and pudding
- Sheet that contained medicine
- Egg container
- Plastic bottle's label and cap



If the stains are hard to wash, please put the garbage into "Burnable Garbage".



Point
Plastic-made containers and wrapping will be recycled so please wash the stains away and put off the cap or lid when we collect.

! We will collect the plastic bottles on the day for Recyclable Garbage.

Net etc.

- Plastic net-shaped container that contained fruits, etc.

Plastic bags and wraps, etc.

- Plastic bags and wrappings that contained goods
- Plastic shopping bag
- Medicine bags (powder medicine bag)
- Plastic bags -Wrap -Bag that contained sweets



DO NOT PUT THESE IN THE TRASH BAG

- Things that could cause to burn
 - Lighters, spray cans, dry cell batteries, rechargeable dry cell batteries, button batteries, electronic cigarettes, electric toothbrushes etc.
- Items that may cause injury Razors, knives-Medical waste
- Needles (for syringes, intravenous drips, etc.)

*We can also collect those with aluminum-coated (shiny) bags.



Please dispose of items with no plastic mark as "Thermal Recycling Plastic Garbage (Category ③)" on the day for Landfill Garbage.

Please look at the mark on the "plastic"!

Point:
The products that are made from plastic (eg. plastic strainer, plastic basket, plastic lunch box, CD, plastic bucket, plastic toy) are separated into "Plastic product"

Styrofoam containers and shock-absorbent packing materials, etc.

- Trays that contained meat and fish
- Air bubble cushioning sheet, etc.
- Bento containers that were sold by the convenience store
- Cushioning materials for home electrical appliances, etc.

* For large items, please break them up and put them out in designated bags.

※We are checking the garbage that we collect with our hands. Please don't double the bags to one pile of garbage to prevent overlooking.

Resource collection day

Collecting day: Once a month

Collecting place: Designated collection station for Recyclable Garbage



Cans

Steel cans, aluminum cans and code for use with a heavy, duty power supply, etc.

-Cans that contains drink was rinsed after the content had been removed



Cord types used when making a power outage ※organized

Small metals ※ Put it in the can with a cap

-Container made of cans -Spray cans -Paint cans -Wristwatches

-Cans that contained tea, glue, and oil -Insect repellent cans

-Cans that contained drinks.

Plastic bottle, egg cartons with a plastic mark should disposed when "Plastic containers and packaging".



PET bottles

Bottles with "PET" on the label

-Mirin seasoning

-Non-oil dressing bottles

-Bottles of fermented seasoning that contained alcohol

-Cooking Vinegar bottles

-Milk, milk beverage

-Liquor bottles

Glass vessels that contained things used for makeup, perfume, medicine, etc. should be disposed on "Landfill Garbage Day/Ceramics, Glass, and Rubber Goods (Category ①)".

Glass bottles

Separate into clear, brown and other colors.

Keep nothing in the bottle, take the cap off and clean it.

※Labels, caps that cannot be removed, discard as is.

-Bottles of drugs to take

-Juice, beer, liquor bottles

-Vinegar, oil, soy sauce bottles

-Jam, food bottles

-Instant coffee bottles

-Energy drink bottles



Metal items (mainly made from metal)

Pots, kettles, frying pans, and kitchen knives (the blade should be wrapped with cardboard, etc.)

Scissors, Gas cooking stoves (except the built-in type), Microwave and toaster ovens (electric cords should be separated and disposed of under "Cans"), Wrenches and pliers, Bicycles (battery-powered types should be taken to the retailer separately)

Motorcycles, motorized bicycles, and the like may not be disposed of under this category.



Dry batteries, cigarette lighters (place them in the collection container)

Dry batteries, cigarette lighters (including disposable lighters)

E-cigarettes

Thermometers (except for the digital type)

After removing the batteries, digital thermometers should be disposed of on the day for Landfill Garbage (Category ③).



Used paper

(Paper larger than 55×91mm)



Divide them into the following 4 groups.

Bundle them out by type with paper string.

1. Newspapers and leaflets

2. Cardboard

3. Beverage cartons (with white interiors)

4. Others (books, miscellaneous paper, magazines) (*CDs/DVDs that come with some of these should be disposed of on the day for Landfill Garbage (Category ③)).

Non-recyclable paper: Any items with aluminum inside, carbon paper, thermal paper, vinyl-coated paper, or any other processed paper should be disposed of as "Burnable Garbage".

When disposing of beverage cartons: Rinse, cut open, and dry the carton well before disposal. Please refrain from taking these out on a rainy day.

Clothing

Clothing should be bundled with string and disposed of without removing the buttons.

Clothing soiled with oil, etc. should be disposed of as "Burnable Garbage". Please refrain from taking it out on a rainy day as wet clothing cannot be recycled.

Clothes, towels, and other wearable items

Underwear should be disposed of as "Burnable Garbage".



Landfill Garbage (unburnable, non recyclable garbage)

Days for Collection: Once a month

Place: Designated collection station for Landfill Garbage

Plates, Glass, Rubber Goods, etc. (Category ①)



- Mirrors/aluminum items
- Boots
- golf ball
- electrically heated carpet
- LED lights
- Silica gel packets
- light bulbs

Point
Broken plates and glass should be wrapped with paper (such as newspaper) before disposal. Please put a warning label such as "Dangerous", "Broken article", or "Glass (キケン", "われもの", or "ガラス")", respectively on the bag.

Note: Mattresses with springs are divided into steel and fabric.

Plastic/leather items and home electrical appliances with plastic exteriors should also be disposed of under this category.

Point
Big items should be made into smaller pieces (less than 1 m) to be bundled with string. Small items should be placed in a designated garbage bag.

Burnable Large Garbage (Category ②)

- Wooden items, furniture
- Cut trees and big branches
- Towel blanket/blankets
- Futon/futon covers
- Floor pillows, sheets, stuffed toys
- Rugs, carpets, curtains



Fluorescent lights

Fluorescent lights should be disposed of as is without breaking them as they may contain harmful substances. Broken fluorescent lights → Place broken fluorescent lights in a Numazu city-designated bag and label it with "蛍光管" ("Fluorescent lights") before disposal.

Thermal Recycling Plastic Garbage (Category ③)

- Toys (plastic)
- Lighting
- CDs/CD cases
- CD players
- Stationery
- Wallets
- Bags
- Belts
- Shoes
- Hair dryers
- Vacuum cleaners
- Electric fans
- Buckets
- Bands for tying (PP bands)

Electric cords of home electrical appliances should be removed and disposed of under "Recyclable Garbage Day/Cans".



Point
When disposing of garbage: Items bigger than the designated bag should be disposed of as is. Please remove batteries before disposal.



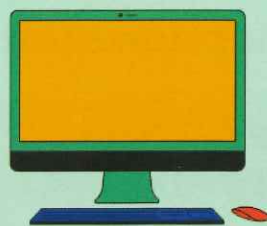
Garbage that cannot be collected by the City

PCs (desktop)

How to recycle :

Check 「ReNet Japan」

(www.renet.jp) for a door-to-door collection service.

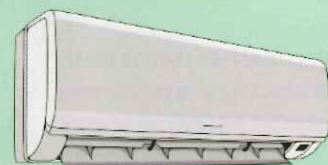


Recycling of home electrical appliances

Air conditioner, TV, refrigerator, washing machine and dryer

How to recycle :

When you throw away your old one and buy a new one, ask the store where you bought the new one to pick it up.



Rechargeable battery
nickel-cadmium battery,
Nickel-Metal Hydride battery,
lithium-ion battery

How to recycle :

Check <https://www.jbrc.com>
for more information.



For safety, rechargeable batteries and button batteries should be covered with cellophane tape or similar material to prevent electricity from passing through them.

Button battery

**SR (silver oxide battery) , LR (Alkaline Button Batteries) ,
PR (air battery)**

How to recycle :

- Take it to the dealer or a nearby cooperative store.
- Check <https://www.botankaishu.jp/m/top.php> for any other details.
- Put out non-recyclable items on "Resource Collection Day: Dry Cell Batteries and Lighters".



Industrial waste (business office consumables):

Garbage disposal operator:

Numazu General Waste Management Service Association (tentative English name) TEL : 055-933-7829